



# PORTABLE UNITS

## GENERAL INFORMATION



Thank you very much for making the FireVent Portable Unit part of your training program. The Portable Units are fairly easy to assemble. The notes and pictures in this binder will help you with the basics of setting the unit up. If you have any difficulty in the assembly of your Portable Unit, please do not hesitate to contact us for assistance (FireVent 775-230-9953). Please feel free to contact us with any questions or concerns you may have as you use and become familiar the FireVent Portable Unit. We would really like to hear any comments that you may have. We would also like to receive any pictures that you would like to email to us using the unit. Any pictures that you are able to email to us could be used in the future for marketing purposes.

#### 10 x 16 Portable Unit:

- Load Summary – When the platform is in the flat position, the maximum load is 10 people or 2,500 pounds (spread evenly about the platform). In the inclined positions, any pitch up to 12/12, the maximum load is 6 people or 1,500 pounds.
- This unit requires 9 – 2 x 6 x 10ft rafters and 5 – sheets of 4 x 8 x ½” OSB or plywood. It is recommended to rip one sheet down the middle so that you have 2 pieces 2ft x 8ft. You can then place these 2 pieces along the lower “gutter” edge of the platform. Do not cut into these lower pieces for ease of re-sheeting. The recommended nailing pattern (to nail down the sheeting) is 16” on center with 6d or 8d nails.
- Use caution during windy conditions. The Portable Units should be tied down or anchored and not used in extreme wind events (wind events greater than 50mph). It is advised to disassemble the unit when extreme wind is anticipated. Mounting tracks are available, should you want to bolt your unit onto a concrete slab or onto a shipping container.



### 8 x 12 x Portable Unit:

- Load Summary – When the platform is in the flat position, the maximum load is 10 people or 2,000 pounds (spread evenly about the platform). In the inclined positions, any pitch up to 12/12, the maximum load is 5 people or 1,000 pounds.
- This unit requires 7 – 2 x 6 x 8ft rafters and 4 – sheets of 4 x 8 x ½” OSB or plywood. The recommended nailing pattern (to nail down the sheeting) is 16” on center with 6d or 8d nails.
- Use caution during windy conditions. The Portable Units should be tied down or anchored and not used in extreme wind events (wind events greater than 50mph). It is advised to disassemble the unit when extreme wind is anticipated. Mounting tracks are available, should you want to bolt your unit onto a concrete slab or onto a shipping container.

# BASIC PART NAMES

Chain Posts - insert so the numbers face inward toward the center of unit.



Back of Unit

Back Leg

“Ridge”  
Joist Run

Jacks

Pitch  
Pockets

Shipping Container  
Mounting Track

Lifting Arm

Side Beam

Joist / Rafter Hanger

Front  
Leg

“Gutter”  
Joist Run

Front of Unit



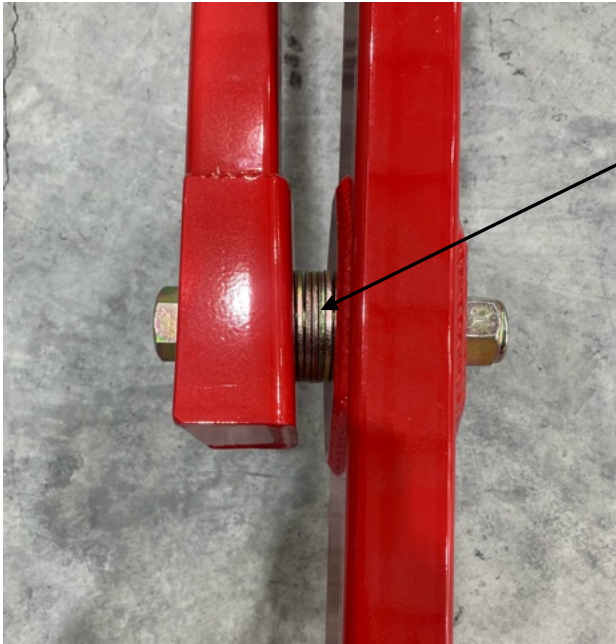
# “SQUARING THE UNIT”



**Square the unit up by taking diagonal measurements from corner to corner, shift the unit in the direction of the shorter measurement, until the measurements are the same.**

**Once the unit is squared up, tighten the bolts up at the corners. You can now take measurement's for track placement on the shipping container. Follow the directions on page 9 for re-assembly on a shipping container.**

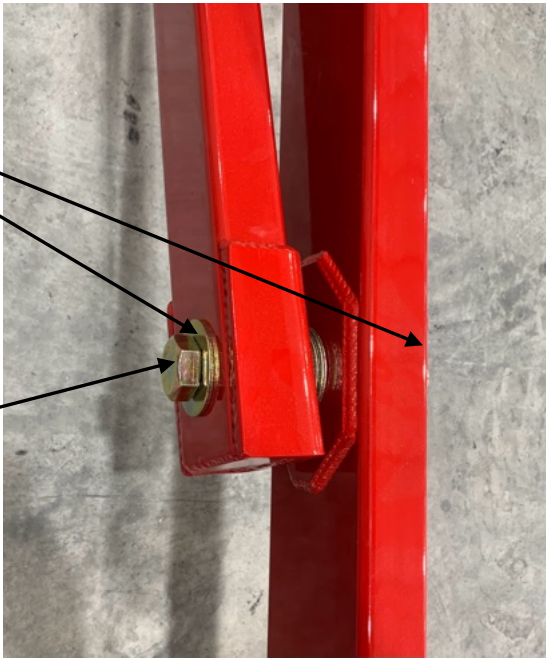
# WASHER PLACEMENT



Place 5 washers between the Lifting Arm and the Side Rail, as a spacer

Place 1 washer at the bolt head and 1 washer at the nut.

Insert the bolt from this direction



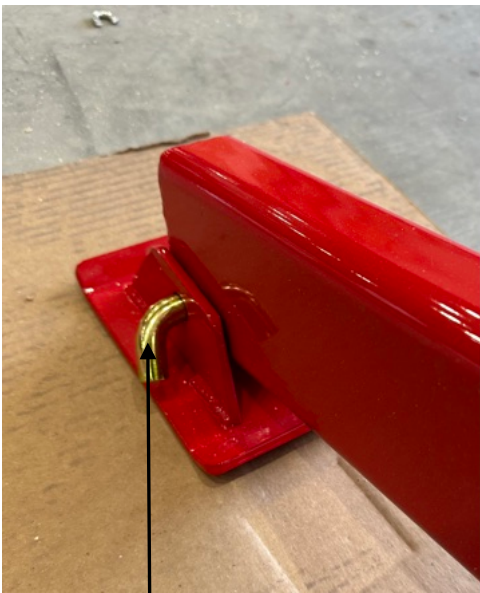




**Corner Connections**



**Use Bent Hitch Pins To Attach Foot To Side Beam**



**Use Bent Hitch Pin To Attach Foot To Lifting Arm**



**Place One Screw 1 1/4" Long Into Each Rafter and Hanger**



You may need to lift the frame up a little so that the jacks can be put into place initially.



From this pitch pocket you will get the 4/12 & 6/12 pitches. Stop the jacks at the corresponding lines on the jack decal.



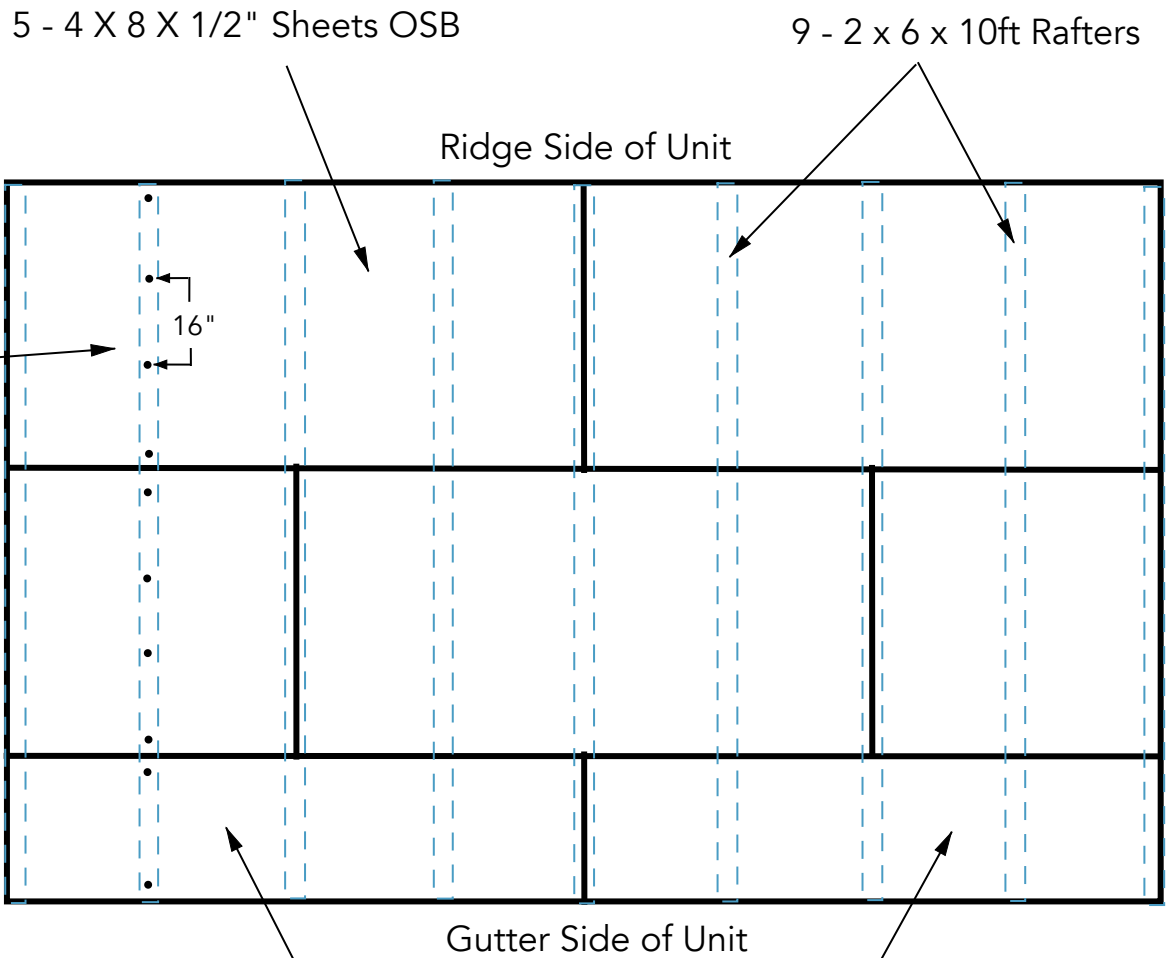
When you go to move the jacks from one pocket to the other, leave one jack pinned in place and unpin the other and move into position and pin, then crank that jack until you can remove the pin from the other jack, and then move the that jack into position and pin.



**These pictures show the units mount onto the Shipping Container Mounting Tracks. Be sure to se the unit completely on the ground, with the tracks in place, so tha you can see how it will go together up on the shipping container**



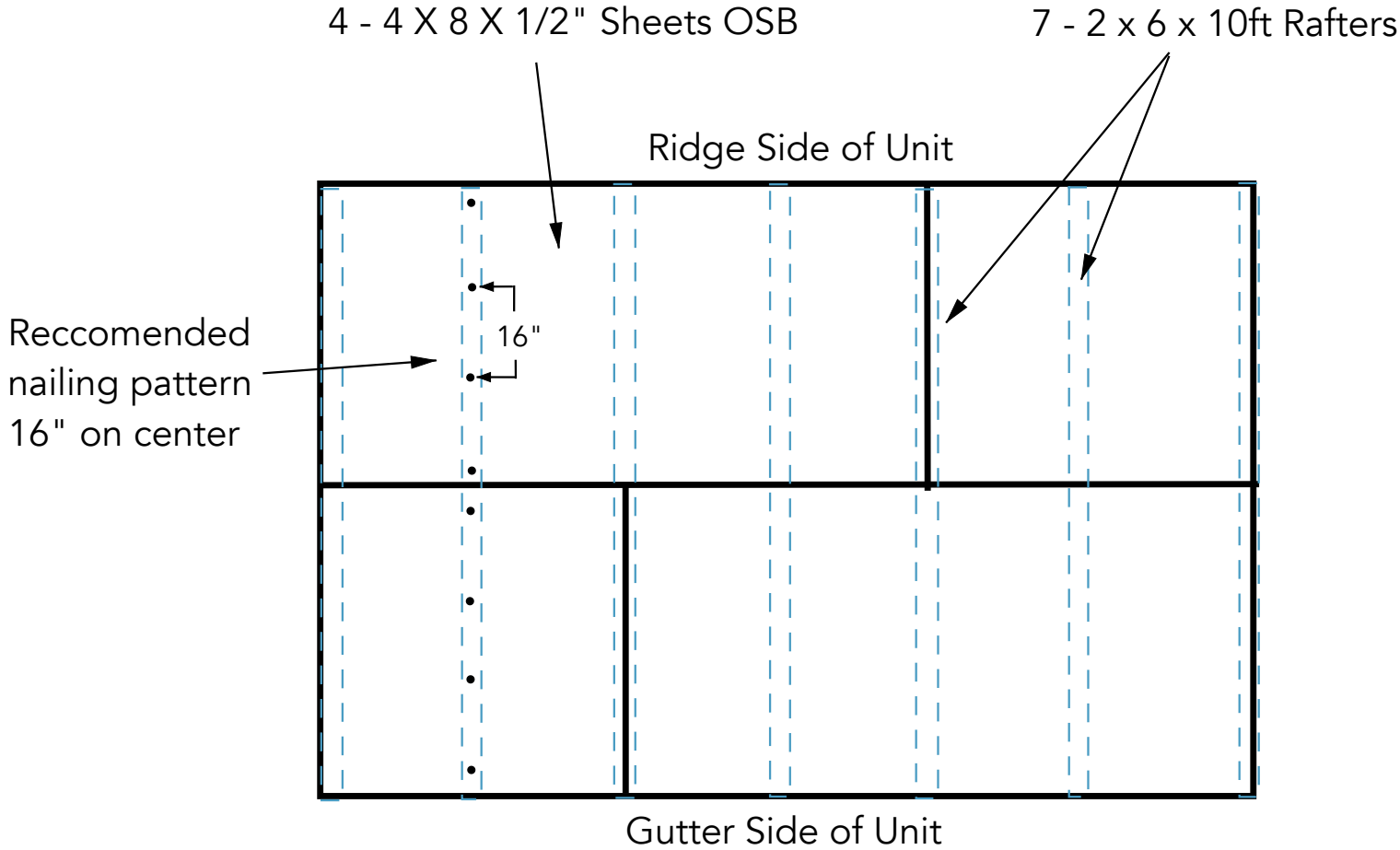
# SHEETING LAYOUT 10 X 16 UNIT



Rip (cut) one sheet of OSB down the middle, length wise, to get 2 pieces 2ft x 8ft each. These 2 pieces go along the gutter edge of the unit. Do not cut into these pieces, leave them intact for ease of re-sheeting.

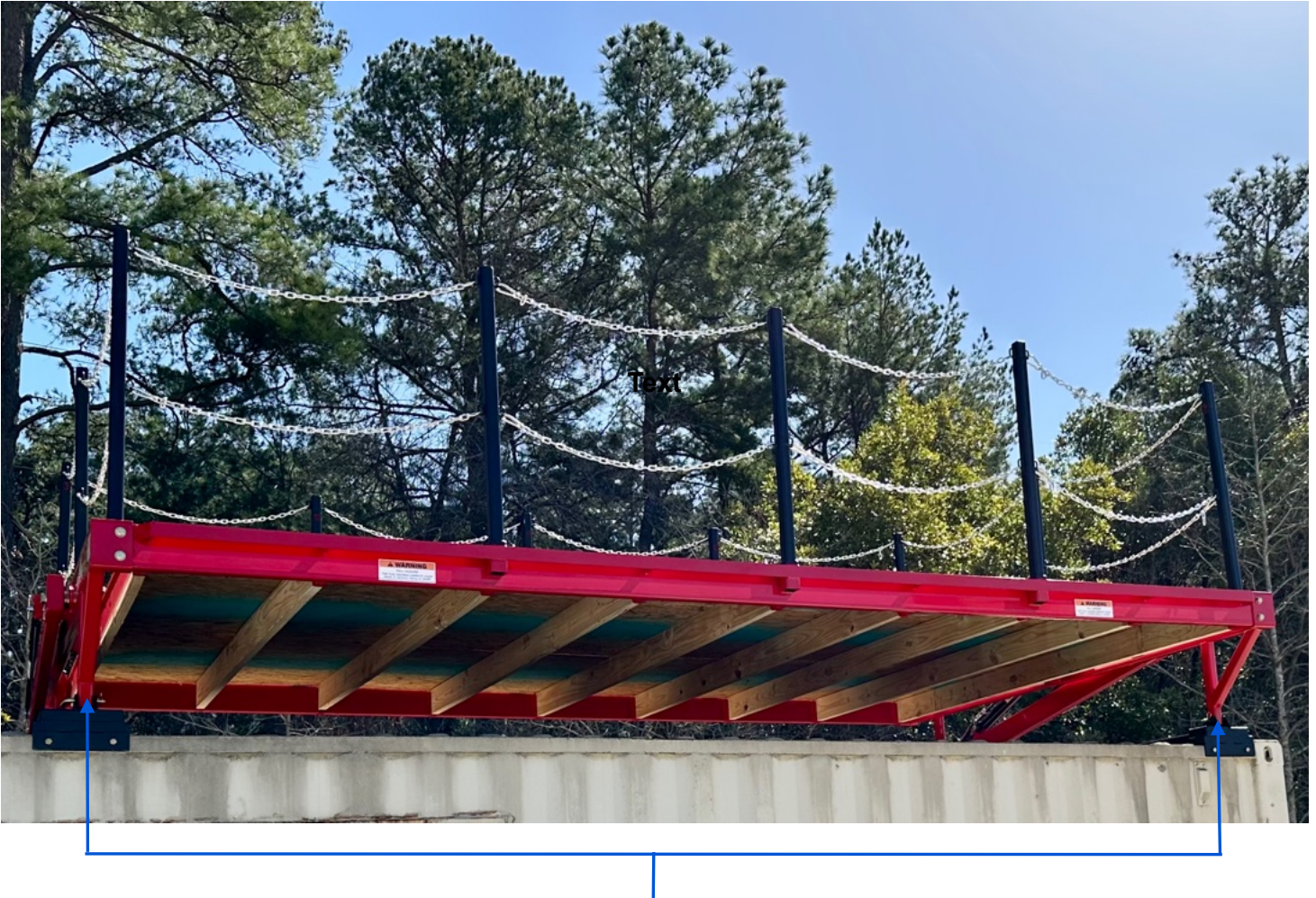
# SHEETING LAYOUT 8 x 12 UNIT

(staggered joint layout shown)





# MOUNTING ON SHIPPING CONTAINER



When mounting the tracks onto a container, the tracks are mounted so the measurement of the front “legs” are 201 inches apart for the 10x16 unit (center to center of legs) and 153 inches apart for the 8x12 unit

Once the tracks are sitting in place (correct measurement) on the container, drill and bolt the the front of the tracks “gutter side” in place. Once the front of the tracks are bolted, you can now set the side beams in place and put the bent hitch pins in through the hole of the front of the tracks and the front leg, the Side Beams will now be secure and stand upright.

Once the Side Beams are in place, you can lift the front “gutter side” joist run up (preferably with a forklift) and insert it into the pockets on the Side Beams and pin it in place. Do the same for the “ridge side” joist run and once it is pinned in place, then put the Lifting Arms and Jacks in place. Once this is complete, square the unit up and tighten the corner bolts.

Once the unit is fully assembled, check the alignment and spacing between the Side Beams and the Lifting Arms, if needed move the other end of the tracks to create the proper alignment and spacing and then drill and bolt the back “ridge side” of the tracks to the container.

















## Limited Warranty

All FireVent, LLC products are warranted to be free from defects in materials and workmanship for a period of two years from the date of original purchase. Manufacturer agrees to repair or, at manufacturer's option, replace equipment supplied by manufacturer, which proves to be defective in materials or workmanship. This warranty is limited to defects arising under normal usage and does not cover malfunctions or failures resulting from the misuse, abuse, neglect, alteration, modification, or repairs by other than manufacturer's authorized service facility.

For warranty issues or concerns please contact FireVent, LLC:

[info@FireVent.us](mailto:info@FireVent.us) P: 775-230-9953 F: 775-883-2387



**! WARNING**

**8x12 Portable Unit Maximum Load Rating**

**Flat Position:**

**10 people or 2,000 lbs. Evenly Distributed**

**Inclined Position Any Pitch:**

**5 people or 1,000 lbs. Evenly Distributed**

**! WARNING**

**10x16 Portable Unit Maximum Load Rating**

**Flat Position:**

**15 people or 3,000 lbs. Evenly Distributed**

**Inclined Position Any Pitch:**

**8 people or 2,000 lbs. Evenly Distributed**

**! WARNING**

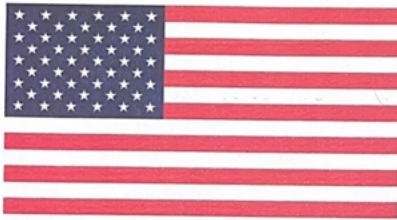
**This unit should be tied down or anchored and not used in extreme wind events greater than 50mph. It is advised to disassemble the unit when extreme wind is anticipated.**



# **WARNING**

## **FALL HAZARD**

**Fall from elevated platform could  
result in serious injury or death**



**MADE IN USA**

**UNITED STATES  
PATENT NO.**

**8,360,782**

**9,646,515**

**10,242,594**

**11,844,974**